



workplace creation and transformation



JAC Interiors designs, project-manages and furnishes distinctive working environments.

[www.jac-group.co.uk](http://www.jac-group.co.uk)



workplace creation and transformation

## Intelligent design, rigorous project management.

If you're considering a move to new premises or opening another office, you know how important it is to appoint commercial property agents and lawyers who will give you astute independent advice.

What you may not realise is that it can be just as important to appoint a design and project management company who will apply the same level of professional objectivity to the construction of your new interiors. A company that will represent your interests in their management of the contractors you appoint.

Unlike many office design businesses, we don't build interiors. We design and project-manage them. All our experience tells us it's better this way.

Better, because it leaves you free to choose – with our help – the best contractor for the job, rather than the one that comes bolted onto the design proposals. This means:

- You can be sure that the winning build tender is complete and good value for money, because we will have scrutinised every element of it.
- You have one point of contact – your JAC designer/project manager – throughout the process.
- You don't need to maintain a day-to-day watch over the progress, accuracy or quality of the build. That's our responsibility.

Another difference is that we don't draw a line between design and project management. The designer we assign to your project will manage it right through to completion, to ensure that the scheme and specifications are followed down to the last detail.

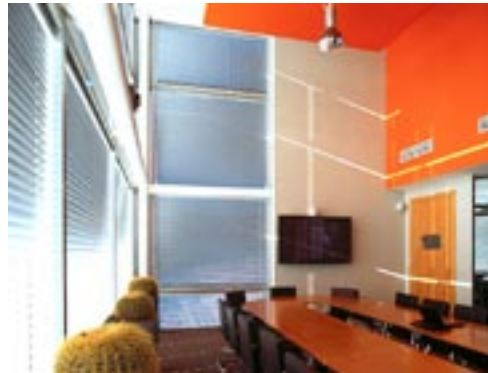
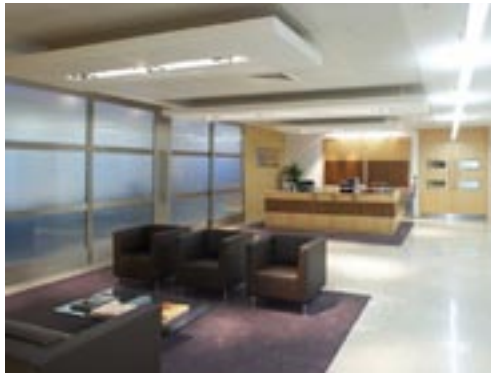
Since 1979, JAC Interiors has grown through repeat business and referrals from clients who understand the advantages of this approach. Now we design and manage projects with a combined value of over £20 million a year.

Before you appoint us, we'll find out how your business works now, and show you how much better it could work in the new interiors we envisage for you.





workplace creation and transformation



### Natexis Banques Populaires

**Project** Two new floors.  
**Location** King William Street, City of London.  
**Size** 28,000ft<sup>2</sup>.

### Harley-Davidson

**Project** New European headquarters.  
**Location** Oxford Business Park.  
**Size** 30,000ft<sup>2</sup>.

### Accel Partners

**Project** Project design and fit-out of a mansard floor.  
**Location** St James's Street, London SW1.  
**Size** 5,000ft<sup>2</sup>.

### Texas Pacific

**Project** New London offices.  
**Location** Carlton Gardens, SW1.  
**Size** 15,000ft<sup>2</sup>.

**Other recent clients include:** GMAC, Ericsson Hewlett-Packard, Condé Nast, Apollo Management, Trayport, Sacker & Partners, Matrix Partners, Paul Capital, Gleacher Shacklock, ARM Technologies, HBK Europe, Aberdeen Asset Management, Merlin Biosciences.



## From planning to completion and beyond.

One point of  
contact makes  
for a seamless  
process.



**For a preliminary discussion  
or credentials presentation,  
please contact:**

JAC Interiors Group plc  
Swan House  
81 Blythe Road  
London  
W14 0HP

tel (44) (0) (20) 7602 0700

fax (44) (0) (20) 7603 5653

email John Cox  
john.c@jac-group.co.uk

Trevor Mattacks  
trevor.m@jac-group.co.uk

[www.jac-group.co.uk](http://www.jac-group.co.uk)

page 4 of 4

We closely manage every stage of the project – from space planning through to post-construction support – to ensure that every detail meets our standards and your expectations.

It starts with consultancy – with all the investigative work we do before any design work is done. And after you're installed in your new environment, we remain available to you to help you adapt your surroundings as your business evolves.

### **Space planning**

As part of our initial, pre-contract proposal, we'll strip the space down, in our mind's eye, and reconfigure it around your current and anticipated headcount and preferred departmental adjacencies.

In fact, we'll present you with a range of different ways of planning your space, and explain what impact each of these plans will have on the overall budget. So you'll have a series of detailed cost plans before you even appoint us.

### **Design & project management**

Once we've completed the briefing and research phase, we'll produce initial space plans and visuals, including samples of materials and colours.

The next stage is to prepare detailed drawings and specifications which, on your approval, will then be put out to tender.

During construction, your JAC designer/project manager will be your single point of contact.

### **Mechanical & electrical design**

The mechanical and electrical infrastructure – power, cabling, lighting, air-conditioning, plumbing, fire detection systems, lifts – can account for as much as 50% of the total cost of a fit-out. So it needs to be carefully planned.

Our M&E consultants will develop a thorough infrastructure plan to ensure that everything works perfectly on hand-over and is easy to maintain over the coming years.

### **IT & comms**

We're highly experienced designers and installers of advanced IT and communications facilities, such as dealing rooms and local area networks.

As part of our planning process, we'll conduct a full technology audit to determine where to locate your hardware, cabling and access points. We want you to have a network that's easy to maintain, expand and reconfigure.

We'll also establish your audio-visual needs, so we can design plasma screens, video and audio-conferencing equipment and surround-sound systems into your new surroundings.

### **Furniture**

JAC sources and supplies over £5 million of furniture a year, not only as part of our design and fit-out services, but also on an ad-hoc basis.

As part of our procurement service, we'll visit your offices and draw up a space plan around the furniture we propose for you – including more than enough storage.